

CS41, 51 & 61 - Chest Safe (Job Site) Boxes - Aluminum & Steel - Single Top Open Lid

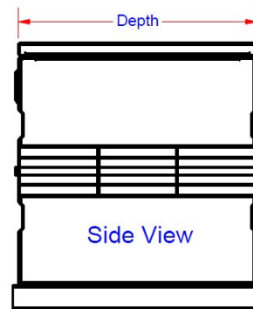
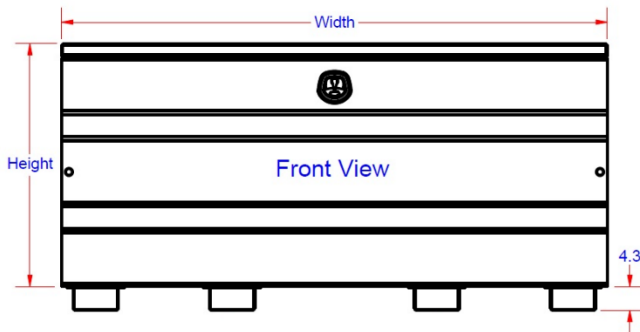
Chest Safe boxes are super heavy duty and offer easy access to your tools and equipment. Boxes can be mounted on truck box, flatbed or trailer. These boxes are perfect for storing your equipment, tools and personal gear. Chest safe boxes are available in different sizes, and can be ordered custom size. All AMERICAN TRUCKBOXES boxes are designed and built to keep your equipment safe and secure.

Description

- An engineered aluminum or steel powder coated construction
- Fully seam welded on all seams and corners
- Stainless steel continuous hinge on full length of lid
- Gas Springs to “pop” and keep lid open.
- Channel braced reinforced lid and sides
- Lockable and cross latched full length of lid
- Adjustable lock striker for positive weather seal
- Automotive type weather seal
- Caring handles and tie down full depth of box
- Forklift slots – smaller boxes come standard with two slots



Shown without Slots



Handle: 1A010-50-SS

Note: * Boxes are available in black and white, add “b” for black and “w” for white after part number.

Model Number	Material	Height (in.)	Depth (in.)	Width (in.)	Lid Opening Depth (in.)	Lid Opening Width (in.)	Weight (lb.)
ACS51GF-243048SL-TOT	.125 Smooth/.100 Thread	24	30	48	21-3/4	42.00	138
ACS51GF-243648SL-TOT	.125 Smooth/.100 Thread	24	36	48	27-3/4	42.00	158
ACS51GF-303060SL-TOT	.125 Smooth/.100 Thread	30	30	60	21-3/4	54.00	190
ACS51GF-303072SL-TOT	.125 Smooth/.100 Thread	30	30	72	21-3/4	66.00	220
ACS51GF-342848SL-TOT	.125 Smooth/.100 Thread	34	28	48	19-3/4	42.00	162
ACS51GF-342860SL-TOT	.125 Smooth/.100 Thread	34	28	60	19-3/4	54.00	178
ACS51GF-342872SL-TOT	.125 Smooth/.100 Thread	34	28	72	19-3/4	54.00	196
ACS51GF-363672SL-TOT	.125 Smooth/.100 Thread	36	36	72	37-3/4	66.00	270
ACS51GF-363696SL-TOT	.125 Smooth/.100 Thread	36	36	96	27-3/4	90.00	340
ACS51GF-424296SL-TOT	.125 Smooth/.100 Thread	42	42	96	33-3/4	90.00	406
ACS61GF-363696SL-TOT	.190 Smooth/.188 Thread	36	36	96	27-3/4	90.00	510
ACS61GF-424296SL-TOT	.190 Smooth/.188 Thread	42	42	96	33-3/4	90.00	545
SCS41GF-243048SL-TO*	14 Gauge Steel	24	30	48	21-3/4	42.00	256
SCS41GF-243648SL-TO*	14 Gauge Steel	24	36	48	27-3/4	42.00	287
SCS41GF-303060SL-TO*	14 Gauge Steel	30	30	60	21-3/4	54.00	382
SCS41GF-303072SL-TO*	14 Gauge Steel	30	30	72	21-3/4	66.00	399
SCS41GF-342848SL-TO*	14 Gauge Steel	34	28	48	19-3/4	42.00	299
SCS41GF-342860SL-TO*	14 Gauge Steel	34	28	60	19-3/4	54.00	388
SCS41GF-363672SL-TO*	14 Gauge Steel	36	36	72	21-3/4	66.00	487
SCS51GF-363696SL-TO*	12 Gauge Steel	36	36	96	29-3/4	89-3/4	681
SCS51GF-424296SL-TO*	12 Gauge Steel	42	42	96	29-3/4	89-3/4	722