

TL – Tank L-Shape - Steel or Aluminum

Tanks are heavy duty, and offer auxiliary supply for water, diesel, oil and/or bio fuels. Tanks can be mounted on or in truck box, flatbed and trailer. Tanks are available in different sizes, and can be ordered custom size. It is the user's responsibility to comply with local, state and federal requirements pertaining to safe transportation, loading and discharging of tank contents. **These tanks are not intended to be used for gasoline or cannot be used to transfer gasoline to another vehicle.** All AMERICAN TRUCKBOXES tanks are designed and built to a quality you respect.

Description

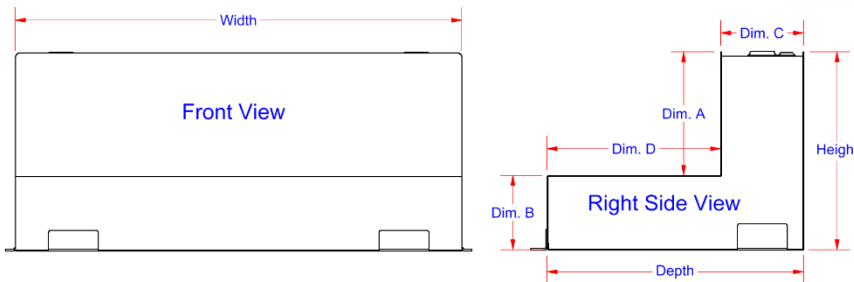
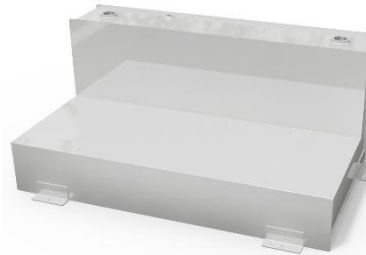
- An engineered steel or aluminum construction
- Fully seam welded on all seams and corners
- Built-in baffle(s) reduces sloshing, larger tanks
- 2" female pipe thread couplings - inside reinforced
- 3/4" top fitting and bottom drain - Optional roll over valve
- Designed to work with cross box or chest box
- Pressure tested for leaks
- Powder coated baked-on finish, steel tanks
- Mounting tabs to secure tank
- Mounting kit not included - M3712-TMK



TFC20-SF-T
TFA20-SF-T



Steel Tank



Note: Tanks are to be mounted as per our mounting installation guide. Failure to properly mount tank will void warranty. For mounting tanks use M3700 series mounting kits.

Note: * Tanks are available in black and white, add "b" for black and "w" for white after part number.

Model Number	Material	Height (in.)	Depth (in.)	Width (in.)	Height A (in.)	Height B (in.)	Depth C (in.)	Depth D (in.)	Pickup Box	Capacity (Gallons)	Weight (lb.)
STL41-243128-SB-*2	14 Gauge Steel	24	31	28	15	9	10	21	Any	46	94
STL41-201457-SB-*2	14 Gauge Steel	20	14	57	11	9	9	5	6	48	128
STL41-201857-SB-*2	14 Gauge Steel	20	18	57	11	9	9	9	6-1/2	54	142
STL41-162848-SB-*2	14 Gauge Steel	16	28	48	8	8	9	19	Any	58	134
STL42-242660-DB-*2	14 Gauge Steel	24	26	60-48	15	9	6	20	6' Ball	65	164
STL41-243154-DB-*2	14 Gauge Steel	24	31	54	15	9	11	21	8'	96	180
STL42-212960-DB-*2	14 Gauge Steel	21	29	60-48	12	9	8	19	6'-6-1/2	70	158
STL42-283160-DB-*2	14 Gauge Steel	28	31	60-48	19	9	10	21	6'-6-1/2	98	215
STL41-243159-DB-*2	14 Gauge Steel	24	31	59	15	9	10	21	8'	98	196
ATL51-243128-SB-*2	.125 Alum	24	31	28	15	9	10	21	Any	46	52
ATL51-201457-SB-*2	.125 Alum	20	14	57	11	9	9	5	6	48	74
ATL51-201857-SB-*2	.125 Alum	20	18	57	11	9	9	9	6-1/2	54	80
ATL51-162848-SB-*2	.125 Alum	16	28	48	8	8	9	19	Any	58	74
ATL52-242660-DB-*2	.125 Alum	24	26	60-48	15	9	6	20	6' Ball	65	102
ATL51-243154-DB-*2	.125 Alum	24	31	54	15	9	11	21	8'	96	108
ATL52-212960-DB-*2	.125 Alum	21	29	60-48	12	9	8	19	6'-6-1/2	70	90
ATL52-283160-DB-*2	.125 Alum	28	31	60-48	19	9	10	21	6'-6-1/2	98	115
ATL51-243159-DB-*2	.125 Alum	24	31	59	15	9	10	21	8'	98	108

Note: Tanks are available in different configuration and custom sizes; call the factory for different sizes and options.