

## HCC - Cross Boxes - Aluminum & Steel - Double Top Open Lids

Cross boxes are heavy duty, high capacity and offer easy access from side of your truck. Boxes are mounted behind cab. These boxes are perfect for storing your equipment, tools and personal gear. Cross boxes are available in different sizes, and can be ordered custom size. All AMERICAN TRUCKBOXES boxes are designed and built to keep your equipment safe and secure.

### Description

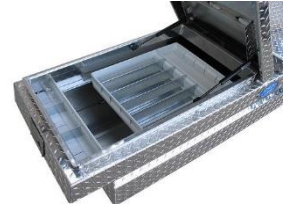
- An engineered aluminum or steel powder coated construction
- Fully seam welded on all seams and corners
- Stainless steel continuous hinge full length of door
- Channel braced reinforced lid & reinforced bottom plate
- Gas springs to “pop” and keep lid open
- Lockable stainless steel adjustable latch & adjustable lock striker
- Sliding tray with dividers
- Rain gutter and automotive type weather seal
- Automotive style latch with smooth rotary action
- Mounting kit included – M3500R



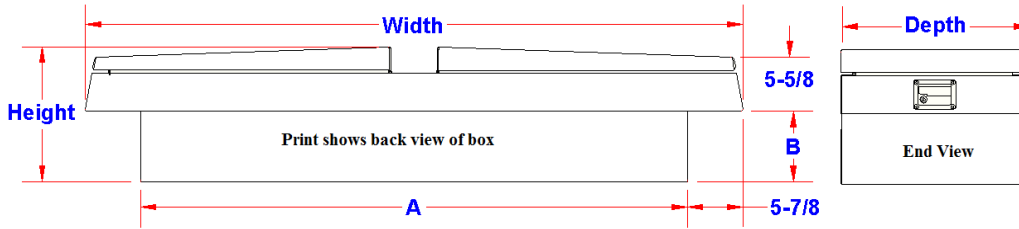
Diamond Thread



Smooth



Steel



Model Number	Material	Dim. A (in.)	Dim. B (in.)	Height (in.)	Depth (in.)	Width (in.)	Weight (lb.)
AHCC4-142072DL-TOTT	.063/.100 Thread	60-1/8	7-3/8	14	20	72	78
AHCC4-182472DL-TOTT	.063/.100 Thread	60-1/8	11-3/8	18	24	72	94
AHCC4-142062DL-TOTT	.063/.100 Thread	50-1/8	7-3/8	14	20	62	72
AHCC4-162462DL-TOTT	.063/.100 Thread	50-1/8	9-3/8	16	24	62	82
AHCC5-142072DL-TOTT	.100 Thread	60-1/4	7-1/2	14	20	72	92
AHCC5-162872DL-TOTT	.100 Thread	60-1/4	9-1/2	16	28	72	116
AHCC5-182472DL-TOTT	.100 Thread	60-1/4	11-1/2	18	24	72	110
AHCC5-142062DL-TOTT	.100 Thread	50-1/4	7-1/2	14	20	62	84
AHCC5-162462DL-TOTT	.100 Thread	50-1/4	9-1/2	16	24	62	95
AHCC5-142072DL-TOT	.090 Smooth/.100 Thread	60-1/8	7-1/2	14	20	72	84
AHCC5-162872DL-TOT	.090 Smooth/.100 Thread	60-1/8	9-1/2	16	28	72	108
AHCC5-182472DL-TOT	.090 Smooth/.100 Thread	60-1/8	11-1/2	18	24	72	102
SHCC5-142072DL-TO*	16 Gauge Steel	60	7-1/2	14	20	72	145
SHCC5-162872DL-TO*	16 Gauge Steel	60	9-1/2	16	28	72	186
SHCC5-182472DL-TO*	16 Gauge Steel	60	11-1/2	18	24	72	175
SHCC5-142062DL-TO*	16 Gauge Steel	50	7-1/2	14	20	62	132
SHCC5-162462DL-TO*	16 Gauge Steel	50	9-1/2	16	24	62	150