

CC - Steel and Stainless Steel Low Capacity Sides Boxes - Single & Double Lid(s)

Low capacity side boxes are heavy duty, low capacity and offer easy access from either side of the truck. Side boxes come in different sizes and with unique rounded lid(s). All AMERICAN TRUCKBOXES boxes are designed and built to keep your tools safe and secure.

Description

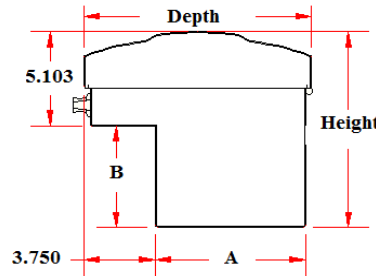
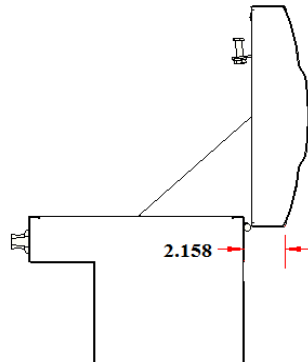
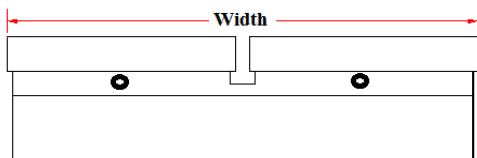
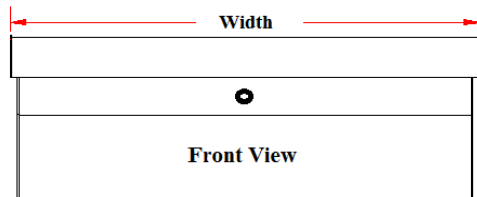
- An engineered steel powder coated or stainless steel construction.
- Fully seam welded on all seams and corners.
- Cable supports to support lid open.
- Crowned crush proof lid
- Powder coated baked-on finish
- Lockable stainless steel push-in latches.
- Adjustable lock striker for positive weather seal.
- Brass bushing grease-able hinges to avoid freeze-ups
- Steel powder coated sliding tray slides the full length of toolbox.
- Full length divider front compartments.
- Automotive push button style latch with smooth rotary action.
- Automotive type weather seal.
- Mounting kit included – M3540R



Steel



Stainless Steel



Note: Boxes are available in black and white, add “b” for black and “w” for white after part number.

Model Number	Material	Dim. A (in.)	Dim. B (in.)	Height (in.)	Depth (in.)	Width (in.)	Weight (lb.)
SCC-10.751236SL-TO	16-gauge steel or (stainless steel)	8	5.5	10.75	12	36	43
SCC-10.751248SL-TO	16-gauge steel or (stainless steel)	8	5.5	10.75	12	48	53
SCC-10.751260SL-TO	16-gauge steel or (stainless steel)	8	5.5	10.75	12	60	64
SCC-10.751260DL-TO	16-gauge steel or (stainless steel)	8	5.5	10.75	12	60	66
SCC-10.751272DL-TO	16-gauge steel or (stainless steel)	8	5.5	10.75	12	72	76
SCC-10.751290DL-TO	16-gauge steel or (stainless steel)	8	5.5	10.75	12	90	95

Note: Add a S to the beginning of the part number for Stainless Steel